



be water, be Genebre

ШАРОВОЙ КРАН

Артикул: 2119

Технические характеристики

Архангельск (8182)63-90-72
Астана +7(7172)727-132
Белгород (4722)40-23-64
Брянск (4832)59-03-52
Владивосток (423)249-28-31
Волгоград (844)278-03-48
Вологда (8172)26-41-59
Воронеж (473)204-51-73
Екатеринбург (343)384-55-89
Иваново (4932)77-34-06
Ижевск (3412)26-03-58
Казань (843)206-01-48
Калининград (4012)72-03-81
Калуга (4842)92-23-67
Кемерово (3842)65-04-62
Киров (8332)68-02-04

Краснодар (861)203-40-90
Красноярск (391)204-63-61
Курск (4712)77-13-04
Липецк (4742)52-20-81
Магнитогорск (3519)55-03-13
Москва (495)268-04-70
Мурманск (8152)59-64-93
Набережные Челны (8552)20-53-41
Нижний Новгород (831)429-08-12
Новокузнецк (3843)20-46-81
Новосибирск (383)227-86-73
Орел (4862)44-53-42
Оренбург (3532)37-68-04
Пенза (8412)22-31-16
Пермь (342)205-81-47
Ростов-на-Дону (863)308-18-15

Рязань (4912)46-61-64
Самара (846)206-03-16
Санкт-Петербург (812)309-46-40
Саратов (845)249-38-78
Смоленск (4812)29-41-54
Сочи (862)225-72-31
Ставрополь (8652)20-65-13
Тверь (4822)63-31-35
Томск (3822)98-41-53
Тула (4872)74-02-29
Тюмень (3452)66-21-18
Ульяновск (8422)24-23-59
Уфа (347)229-48-12
Челябинск (351)202-03-61
Череповец (8202)49-02-64
Ярославль (4852)69-52-93

ARTICULO: 2119

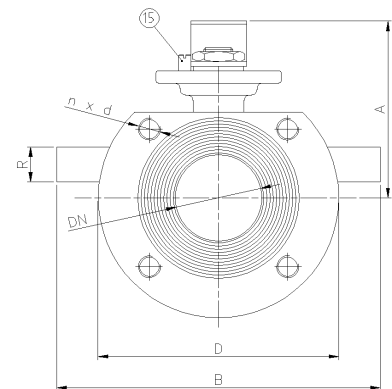
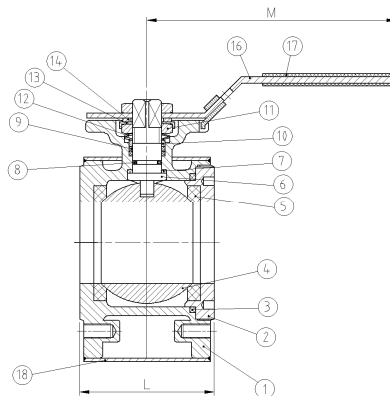
Válvula de esfera inox paso total tipo Wafer c/ cámara de calefacción. Stainless steel full port ball valve w/ heating jacket, Wafer Type.

Características

1. Válvula esfera paso total tipo wafer c/ cámara de calef.
2. Montaje entre bridas DIN PN-16.
3. Construcción en Acero Inoxidable AISI 316.
4. Asientos PTFE + 15 % F.V.
5. Vástago Inexpulsable.
6. Montaje actuador directo según ISO 5211.
7. Sistema de bloqueo incorporado.
8. Presión de trabajo máxima 16 bar.
9. Temperatura de trabajo $-20\text{ }^{\circ}\text{C} + 180\text{ }^{\circ}\text{C}$.

Features

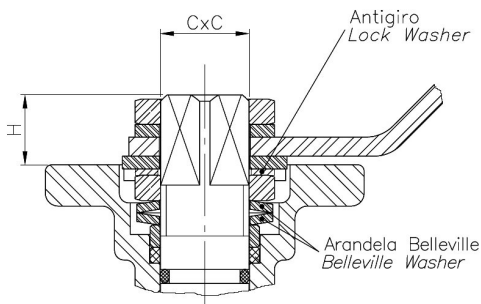
1. Full port ball valve, Wafer type, with heating jacket.
2. Assembly between flanges DIN PN-16.
3. Made of Stainless Steel AISI 316.
4. Ball seats PTFE + 15 % G.F.
5. Blow – out proof stem.
6. Direct mounting actuator acc. to ISO 5211.
7. Block System included.
8. Max. Working pressure 16 bar.
9. Working Temperature $-20\text{ }^{\circ}\text{C} + 180\text{ }^{\circ}\text{C}$.



| Nº | Denominación / Name | Material | Acabado Superficial / Surface Treatment |
|----|----------------------------------|-------------------------------------|---|
| 1 | Cuerpo / Body | Acero Inox. / S.S. CF8M (316) | Decapado / Shot Blasting + Pickling |
| 2 | Tapón / Plug | Acero Inox. AISI 316 / SS 316 | Decapado / Shot Blasting + Pickling |
| 3 | Juntas / Gasket | PTFE | ----- |
| 4 | Bola / Ball | Acero Inox. / S.S. CF8M (316) | ----- |
| 5 | Asiento / Ball Seat | PTFE + 15 % F.V. / PTFE + 15 % G.F. | ----- |
| 6 | Eje / Stem | Acero Inox. AISI 316 / SS 316 | ----- |
| 7 | Arandela / Trust Washer | PTFE | ----- |
| 8 | Tórica / O-ring | Viton | ----- |
| 9 | A. Prensa / Stem packing | PTFE | ----- |
| 10 | Prensa / Stem ring | Acero Inox AISI 304 / S.S. 304 | ----- |
| 11 | Tuerca / Nut | Acero Inox AISI 304 / S.S. 304 | ----- |
| 12 | Arandela Resorte / Spring washer | Acero Inox AISI 304 / S.S. 304 | ----- |
| 13 | Antigiro / Lock Washer | Acero Inox AISI 304 / S.S. 304 | ----- |

| Nº | Denominación / Name | Material | Acabado Superficial / Surface Treatment |
|----|-----------------------|--------------------------------|---|
| 14 | Arandela / Washer | Acero Inox AISI 304 / S.S. 304 | ----- |
| 15 | Tope / Stop Pin | Acero Inox AISI 304 / S.S. 304 | ----- |
| 16 | Maneta / Handle | Acero Inox AISI 304 / S.S. 304 | ----- |
| 17 | Funda / Plastic Cover | Vynil | ----- |
| 18 | Cámara / Jacket | Acero Inox AISI 316 / S.S. 316 | ----- |

Detalle de la zona del Eje / Stem detail



Antigiro / Lock Washer: Previene el desajuste de la tuerca del eje en elevados ciclos de maniobra / Prevents unthreading of stem nut in high cycle automation applications.

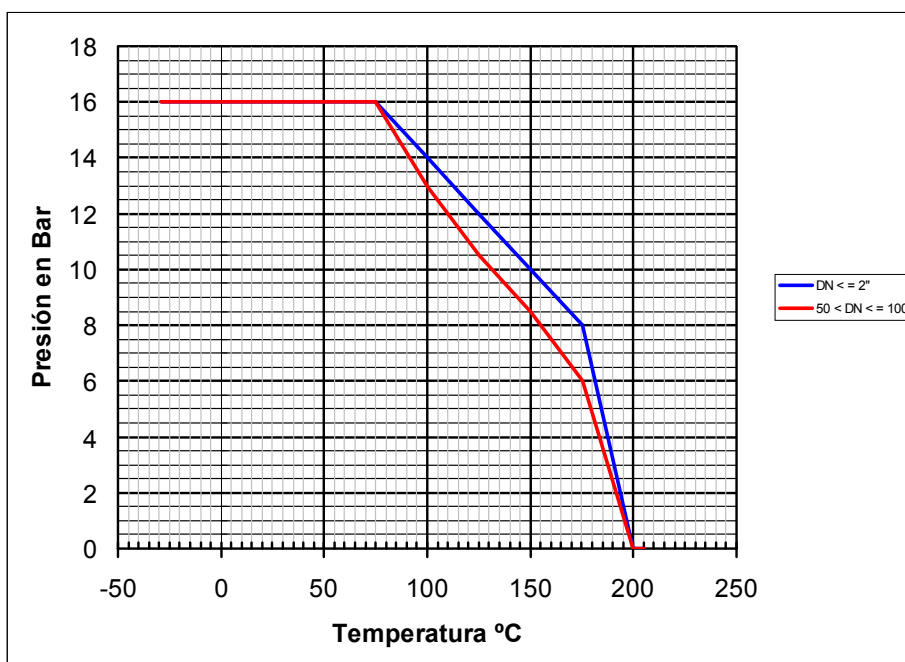
Arandela Belleville / Belleville Washer: Las arandelas belleville proporcionan una carga constante sobre el prensa asegurando un cierre firme en variaciones de condiciones de trabajo. / Standard belleville washers provide constant "live load" on the stem seals, assuring a tight seal even varying service parameters.

DIMENSIONES GENERALES / GENERAL DIMENSIONS

| Ref. | Medida/ Size | PN | Assembly Holes (n x d) | Dimensiones / Dimensions (mm) | | | | | | Peso/ Weight (Kg) |
|---------|-----------------|----|------------------------------|-------------------------------|-----|-----|-----|-----|-------|----------------------|
| | | | | ØD | A | L | M | B | R | |
| 2119 04 | 1/2" | 16 | 4 x M12 | 95 | 85 | 36 | 115 | 150 | G1/2" | 1,340 |
| 2119 05 | 3/4" | 16 | 4 x M12 | 105 | 90 | 38 | 115 | 160 | G1/2" | 1,710 |
| 2119 06 | 1" | 16 | 4 x M12 | 115 | 95 | 50 | 170 | 170 | G1/2" | 2,450 |
| 2119 07 | 1 1/4" | 16 | 4 x M16 | 140 | 100 | 53 | 170 | 190 | G1/2" | 3,800 |
| 2119 08 | 1 1/2" | 16 | 4 x M16 | 150 | 105 | 65 | 210 | 200 | G1/2" | 4,950 |
| 2119 09 | 2" | 16 | 4 x M16 | 165 | 115 | 78 | 210 | 210 | G1/2" | 6,800 |
| 2119 10 | 2 1/2" | 16 | 4 x M16 | 185 | 130 | 98 | 260 | 235 | G1/2" | 10,400 |
| 2119 11 | 3" | 16 | 8 x M16 | 200 | 145 | 118 | 260 | 250 | G1/2" | 14,800 |
| 2119 12 | 4" | 16 | 8 x M16 | 220 | 175 | 140 | 260 | 270 | G1/2" | 19,900 |

| Ref | Medida/ Size | PN | Dimensiones / <i>Dimensions</i> (mm) | | |
|---------|-----------------|----|--------------------------------------|---------|-----------|
| | | | H | C x C | ISO 5211 |
| 2119 04 | 1/2" | 16 | 10 | 9 x 9 | F03 / F04 |
| 2119 05 | 3/4" | 16 | 10 | 9 x 9 | F03 / F04 |
| 2119 06 | 1" | 16 | 10 | 11 x 11 | F04 / F05 |
| 2119 07 | 1 1/4" | 16 | 12.5 | 11 x 11 | F04 / F05 |
| 2119 08 | 1 1/2" | 16 | 14.5 | 14 x 14 | F05 / F07 |
| 2119 09 | 2" | 16 | 14 | 14 x 14 | F05 / F07 |
| 2119 10 | 2 1/2" | 16 | 17 | 17 x 17 | F07 / F10 |
| 2119 11 | 3" | 16 | 16 | 17 x 17 | F07 / F10 |
| 2119 12 | 4" | 16 | 19 | 17 x 17 | F07 / F10 |

CURVA PRESION TEMPERATURA / *PRESSURE TEMPERATURE RATING*



VALORES DE Kv / *Kv VALUES*

Kv = Es la cantidad de agua en metros cúbicos por hora que pasará a través de la válvula generando una pérdida de carga de 1 bar.

Kv = Flow rate of water in cubic meter per hour that will generate a pressure drop of 1 bar across the valve.

| 1/2" | 3/4" | 1" | 1 1/4" | 1 1/2" | 2" | 2 1/2" | 3" | 4" |
|------|------|----|--------|--------|-----|--------|------|------|
| 24 | 43 | 83 | 130 | 205 | 340 | 520 | 1100 | 1820 |

The logo for GENE BRE, featuring the word 'GENEBRE' in a bold, sans-serif font. The letter 'E' is stylized with a horizontal bar extending to the left, creating a unique graphic element.

Архангельск (8182)63-90-72
Астана +7(7172)727-132
Белгород (4722)40-23-64
Брянск (4832)59-03-52
Владивосток (423)249-28-31
Волгоград (844)278-03-48
Вологда (8172)26-41-59
Воронеж (473)204-51-73
Екатеринбург (343)384-55-89
Иваново (4932)77-34-06
Ижевск (3412)26-03-58
Казань (843)206-01-48
Калининград (4012)72-03-81
Калуга (4842)92-23-67
Кемерово (3842)65-04-62
Киров (8332)68-02-04

Краснодар (861)203-40-90
Красноярск (391)204-63-61
Курск (4712)77-13-04
Липецк (4742)52-20-81
Магнитогорск (3519)55-03-13
Москва (495)268-04-70
Мурманск (8152)59-64-93
Набережные Челны (8552)20-53-41
Нижний Новгород (831)429-08-12
Новокузнецк (3843)20-46-81
Новосибирск (383)227-86-73
Орел (4862)44-53-42
Оренбург (3532)37-68-04
Пенза (8412)22-31-16
Пермь (342)205-81-47
Ростов-на-Дону (863)308-18-15

Рязань (4912)46-61-64
Самара (846)206-03-16
Санкт-Петербург (812)309-46-40
Саратов (845)249-38-78
Смоленск (4812)29-41-54
Сочи (862)225-72-31
Ставрополь (8652)20-65-13
Тверь (4822)63-31-35
Томск (3822)98-41-53
Тула (4872)74-02-29
Тюмень (3452)66-21-18
Ульяновск (8422)24-23-59
Уфа (347)229-48-12
Челябинск (351)202-03-61
Череповец (8202)49-02-64
Ярославль (4852)69-52-93

Единый адрес для всех регионов: grb@nt-rt.ru || www.genebre.nt-rt.ru